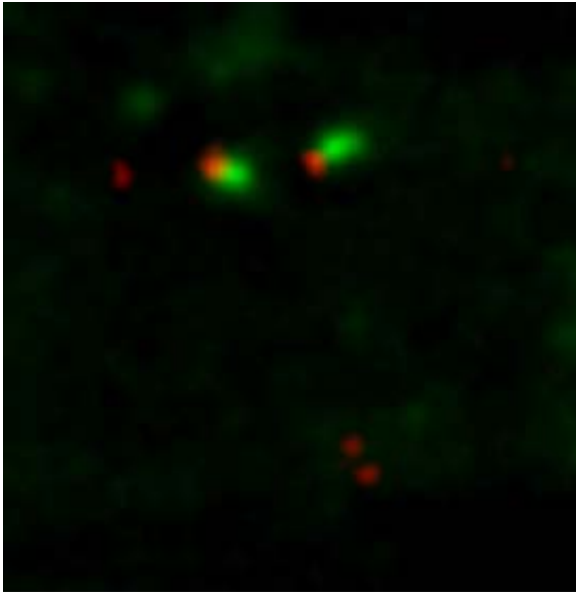


Visualisation of the *Sad1* and *Sad2* loci in nuclei of oat root epidermal cells by FISH



Sad1 (red); *Sad2* (green)

Brush Strokes

Eva is an artist.
She paints chromosomes.

The gene for love, coloured red
lies close to the telomere
on chromosome five
next to envy
green as cat's eyes.

Hope is polygenic,
scattered through the genome
like gold dust.

©Anne Osbourn